



PC-BOD/Titrate Duo™

BOD by Day, Titrate by Night



Load. Start. Done.

PC-BOD/Titrate Duo™

Man-Tech is pleased to announce the release of the PC-BOD/Titrate Duo™. The PC-BOD/Titrate Duo enables laboratories to prepare and analyze samples for BOD₅ then, with the simple change of a rack and probe holder, analyze different samples for pH, conductivity, alkalinity, turbidity and more!

With the PC-BOD/Titrate Duo, Man-Tech delivers:

- BOD and Titration in one
- Quick Return on Investment
- Rock solid technology
- Follows US EPA approved methods

BOD by Day, Titrate by Night

The PC-BOD/Titrate Duo is best suited for environmental laboratories with smaller to medium sized throughput - for example, a laboratory with 30 BOD bottles per day PLUS 20 samples per day for pH, conductivity and alkalinity. The Duo system takes up less bench space than two separate systems, therefore, lab resources are used more effectively. This advantage will make it easier to justify the capital investment, and will deliver an even better return on investment.



Load. Start. Done.

BOD by Day



Titrate by Night



Invest in the Best



Key Features and Benefits

- Follows US EPA, Standard Methods and ISO approved methods
- Lower cost of training due to the DUO platform
- Simple and easy switch between configurations
- Common, dynamic rinse station for both platforms
- Durable, reliable system, delivers results that stand the test of time
- Innovative Autorun buttons simplify operation
- Automated import and export from/to LIMS
- Easily add more samples to the batch while running
- Available with AutoMax™ 73 or AutoMax™ 122

PC-BOD™ Advantages

- Automated addition of dilution water, seed and inhibitor
- Automated rinsing
- Standard YSI probe and meter
- Follows 21st edition of Standard Methods allowing seed/inhibitor to be added after 2/3 dilution water volume has been added, followed by filling to the neck with dilution water
- Quick and easy sample set creation
- Pre-defined sample sets including blanks, seeds and GGA's
- Capability to analyze BOD and CBOD samples in the same batch
- Automates 5- and 7-Day BOD analysis methods

TitraSip™ Multi-parameter Advantages

- Automated pipetting
- Autodilution capabilities for high concentration samples
- Analyze pH, conductivity, alkalinity... all from a single sample
- pH/conductivity/alkalinity in 3 minutes or less per sample (total cycle time dependent on alkalinity concentration)
- 48,000 step buret drive ensures accurate, precise titration results
- Rapidly generated results are accurate and precise
- IntelliRinse™ system ensures system and probes are clean before moving to the next sample

PC-BOD/Titrate Duo - Rack Capacities

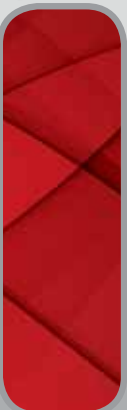
Sampler Type	BOD Rack	Multi-parameter Rack
AutoMax73	11x300ml bottles	73x50ml tubes
AutoMax122	23x300ml bottles	113x50ml tubes

NOTE:

1. The batch size for the BOD system may be larger (e.g. 100 bottles in a batch). The software prompts the chemist when it is time to change racks to continue the batch analysis.
2. Additional titration/ion analysis racks are available, e.g.; 28x125ml for AutoMax73



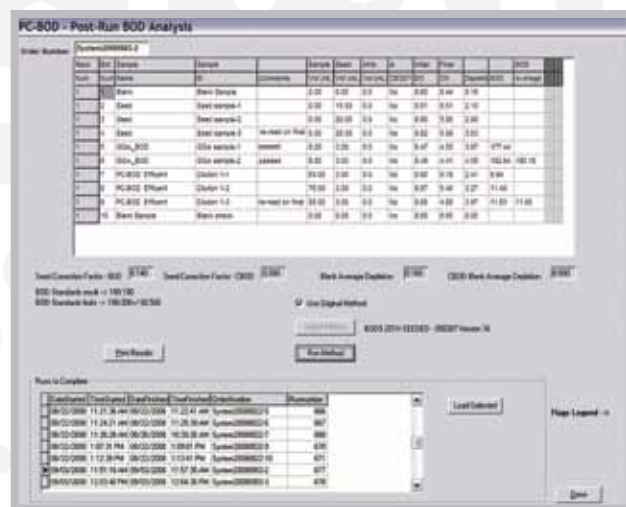
Invest in Man-Tech Automation



Software PC-BOD™

The powerful PC-BOD software is flexible enough to be set up to adapt to your protocol requirements, but simple enough to be used on a daily operational level by technicians.

- Innovative Man-Tech Autorun buttons simplify operation
- Automatic exporting of results to LIMS
- Real-time viewing of flags
- Auto-calibration using the air saturation method
- Customize results screen including user-defined fields



Run /
Results Screen

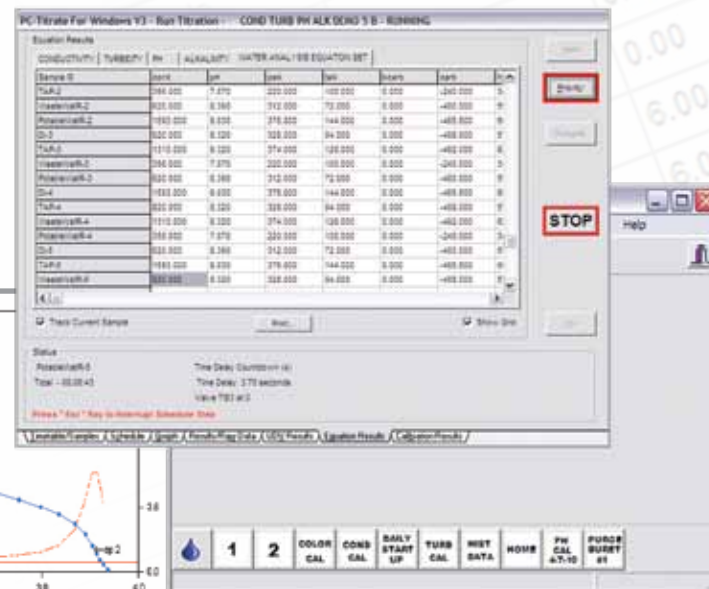
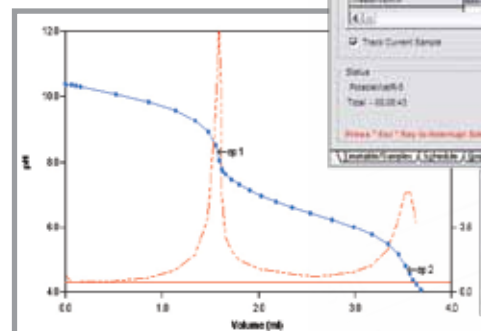


Load. Start. Done.



Main Screen

Titration Curve



TitraSip Multiparameter

PC-Titrate™ Software

The PC-Titrate software controls all facets of the TitraSip Multi-parameter system.

- Controls all facets of the analysis from a single sample
- Innovative Man-Tech Autorun buttons simplify operation
- Pick only the parameters required for each sample
- Auto calibration for pH, turbidity, ISE, colour, etc.
- Up to 16 calibration points for each parameter
- Complete audit trail
- Import/export from/to LIMS
- Decision making capabilities, e.g.: IF/ELSE/WHILE
- Built-in quality control system for electrodes, standards, duplicates, spikes etc.

Man-Tech Associates Inc
2 Admiral Place
Guelph, Ontario CANADA
N1G 4N4

Phone: 519.763.4245
Fax: 519.763.9995
Email: info@mantech-inc.com

www.mantech-inc.com